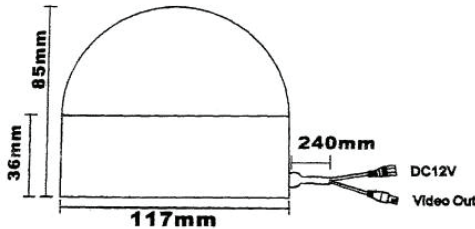
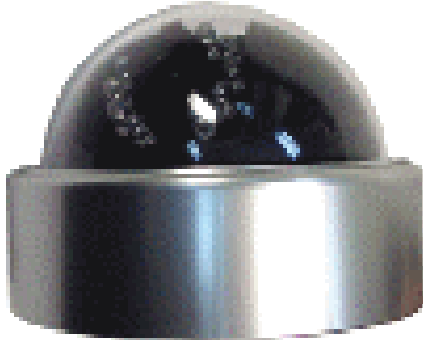




PRODUCT SPECIFICATIONS

Mintron™ B-83X10

1/3", Colour, Vandal-proof, Day/Night, Dome Camera



Features

- 1/3" Extra-View Colour CCD and Mintron 20MIPS DSP
- 380 TV Lines (470 TV line equivalent with Adaptive Edge Enhancement)
- 0.5 LUX at F1.2 (Colour); 0.0 Lux with Infra-Red
- Heavy duty, vandal-proof dome case

Description

A vandal proof, dome, colour CCTV camera with 1/3" Extra View CCD and Mintron 20MIPS DSP. This camera utilizes a cast aluminum base with thick, clear polycarbonate dome with a tamper proof fastening. It is capable of resisting a blow from a sledge hammer or blast from a shotgun. The internal camera includes Infra-Red LEDs for image production at light levels less than 0.5 Lux – down to and including total darkness. It produces excellent quality video, in colour, at 380/470 TV lines. The Extra View CCD provides color images down to an excellent minimum illumination level of 0.5 Lux @F1.2, and black and white images under Infra-Red.

Recommended Use: Indoors, in high damage-risk areas. Provides good quality color video down to relatively low light levels and black and white video under Infra-Red. Not for use pointing at exterior windows or doors, where the high light sensitivity of the CCD causes flaring effects.

Sentromax Surveillance Inc.

149 Morrow Rd. Murillo, Ontario, Canada, P0T 2G0

Tel/Fax: (807) 768-3284 Email: bernard@sentromax.com